



Xerox® ConnectKey™

The right technology for today's
challenges and tomorrow's tasks.

It's easy to become overwhelmed by the countless solutions that promise to fix your most pressing issues.

Choosing the right solutions for your people becomes more complex. You want solutions that simply get it done, behind the scenes — solutions that are there when you need them but stay out of mind because they just work.

Our multifunction printers built on ConnectKey™ technology let you focus on your job and not the technology, providing a critical advantage for small-to-medium businesses and enterprise customers alike. These simple-to-implement systems give you real, practical solutions that easily streamline how you communicate, process and share important information, simplify complex paper-driven tasks, and drive down costs.

Mouse over the above buttons to read each introduction, or click to jump to that section.





Xerox® ConnectKey™ — simplicity redefined.

ConnectKey is a software ecosystem that provides the building blocks to leverage your multifunction printer to simplify the way work gets done.

Solving today's complexities.

Documents are the currency of business. They are the heart of critical workflows and drive almost every aspect of business. When a group of IT managers, business managers, and mobile workers was asked, 70% said optimizing document flow would help them respond to market needs more quickly and 62% said it would improve overall revenue*. Why? Because improved employee productivity has strategic revenue-generating consequences. More-productive employees spend more time on innovation, customer service, winning new business, and making the business more competitive.

Imagine an office environment where all print devices have the same core features and functionality, thereby dramatically increasing adoption, and providing a simplified user training experience with less mistakes and faster proficiency. The common architecture behind ConnectKey features industry-leading security, highlighted by our groundbreaking partnerships with McAfee® and Cisco® to provide additional layers of security software and greater visibility to IT.

Simplifying customer workflows through tools like ConnectKey for SharePoint® or Business Process Outsourcing integration through LiveKey enable large-scale savings and process automation.

ConnectKey Solutions reduce waste and paper consumption, and give you time back in your day to do your job more effectively. Plus, compatibility with energy management solutions such as Cisco EnergyWise and a mix of innovative features enable reduced power consumption so you can achieve your sustainability promises. We have rounded out this amazing ecosystem by empowering today's mobile workforce to conduct business in ways that work for them, with scalable, cloud-ready and mobile solutions.

Whether you manage the devices yourself or choose a Xerox® Managed Print Service, you'll benefit from the tools ConnectKey offers to cut your costs and keep you moving forward.

For more information on Xerox® ConnectKey visit us at www.xerox.com/connectkey.

▶ Click to jump to the following sections:



▶ Rollover icon for more images

Convenience for the way you work today.

With working professionals operating beyond the confines of office walls and a 9-to-5 schedule, yesterday's workplace conveniences may not provide much help today. Which is why ConnectKey™ MFPs offer mobile printing and scanning solutions that integrate fully with cloud-based technologies and mobile devices. You'll benefit from enhanced convenience, increased productivity and a more cost-effective infrastructure.

Connect and share everywhere.

ConnectKey MFP's enable powerful, single-touch scanning workflows in various formats such as text searchable, single/multi-page PDFs that allow you to distribute and archive information wherever it's most useful. You can share your documents via standard network folders, email, cloud-based repositories (DropBox™, Google Docs, Evernote®, etc.), document management utilities, or back-end enterprise resource-planning systems.

Freedom in the office and room to roam.

With the proliferation of smartphones and tablets as must-have business tools, you need a multifunction device that's ready to connect to your on-the-go workforce. ConnectKey MFPs can be connected wirelessly, allowing you the freedom to place the device in more-accessible locations without the additional network infrastructure costs. Plus, support for protocols like Apple AirPrint™ enable users or guests to easily connect and print from their iOS smartphones or tablets.

Whether offsite or onsite, learn more about why Xerox is the only choice for today's mobile professionals by visiting www.xerox.com/mobile.

▶ Click to jump to the following sections:



▶ Rollover icon for more images

Wait no longer for the way you want to work.

Your business operates at the pace of possibility. Staying up to speed means having the right kind of help — a solution that not only empowers you to get today’s work done faster, but one that also gives you the tools you need to adopt new and better ways of working with your colleagues and clients.

No more obstacles.

You need to quickly find and share your work for more effective collaboration, to move information into critical systems for faster decision-making and rapid response time. ConnectKey™ technology enables features like the enhanced address book with favorites, which lets you seamlessly import your existing contacts and roll them out to multiple ConnectKey devices.

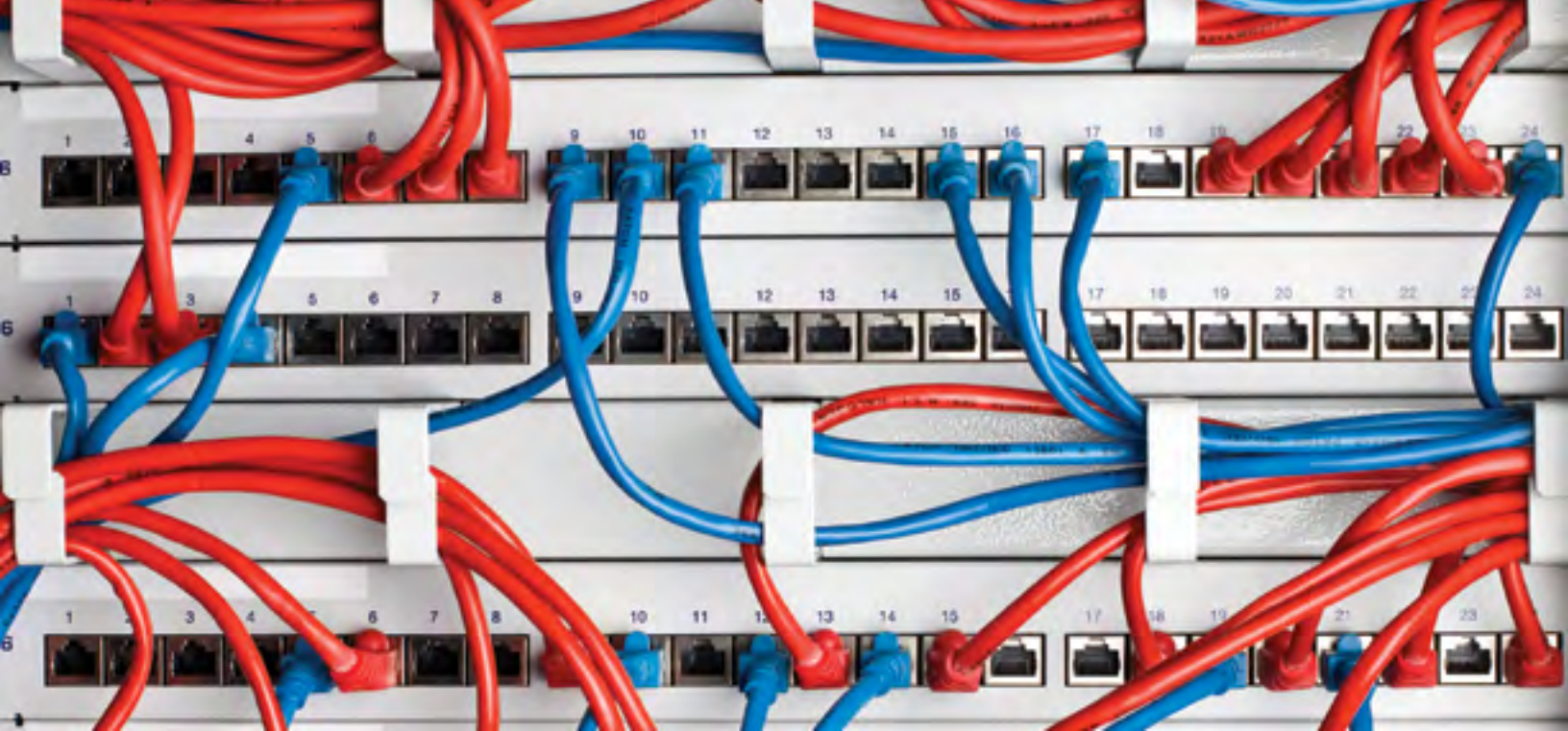
Time-saving administration.

Whether you are a skilled administrator managing hundreds of devices, or one person managing a single device, Xerox gives you tools anyone can use to implement new workflow processes or other tasks. Onboard tools help you address potential issues, enabling multifunction printers built on ConnectKey to stay more productive, longer. And when help’s needed, speed is the key. That’s why we put Online Support and Embedded Help Videos that anyone can follow right on the front panel for fast assistance.

Our Remote Control Panel feature further reduces support and response times, enabling real-time training and troubleshooting from anywhere so you can resolve issues immediately and eliminate the need to wait for on-site visits. Additionally, Xerox® Extensible Interface Platform® (EIP) applications can enable new time savings and communication tools. From custom “Contact” apps that simplify support to “Scan” apps that streamline your everyday document capture.

For more information on other ways you can significantly improve productivity by partnering with Xerox, visit www.xerox.com/mps.

▶ Click to jump to the following sections:



▶ Rollover icon for more images

Connect safely.

Your data. Your business. Making your device more accessible to all comes with risks. And while everyone realizes the need to safeguard their PCs with virus and malware protection, it's also critical to understand that multifunction printers are potential points of entry for malicious activities.



Partnering to protect what's yours.

ConnectKey™ MFPs include McAfee® technology integration, resulting in the industry's first lineup of multifunction printers that protect themselves from potential outside threats. McAfee's whitelisting technology ensures only safe, pre-approved system files to run on your devices, eliminating the need to manually update software levels against new security threats.

Plus, automatic Cisco® TrustSec integration provides comprehensive visibility of all ConnectKey MFPs' endpoints to enforce IT-centric security policies and compliance.

More secure anywhere.

ConnectKey provides the most comprehensive range of advanced features and technologies to help ensure your company's confidential information stays secure. Ready out of the box, our standard security features include 256-bit hard disk encryption, McAfee® protection, image overwrite, secure printing with time deletion and emailing to external mail servers, plus a host of other safeguards that help protect your business-critical information from all vulnerabilities.

Compliance with standards.

At Xerox, we believe comprehensive, multi-layer security that is easy to deploy and manage is a critical factor in the success of any business or organization of any size. Xerox® technology is tested and validated to ensure protection against unauthorized access, and to keep your business compliant with standards across multiple key industries.

For more information about how Xerox helps make you more secure, visit www.xerox.com/security.

▶ Click to jump to the following sections:



▶ Rollover icon for more images

Real-world challenges, real cost savings with simple solutions.

To succeed, your business needs to reduce costs where it can. With Xerox, you can gain an important competitive advantage with innovative tools that help you save time, control costs, simplify the way you manage printing in your office, and get a significant return on your investment.

Convenient Authentication

Xerox® multifunction printers can be upgraded with optional ConnectKey™ Solutions to deliver even greater cost control capabilities. They support an array of card readers that enable users to log into the device using a proximity card, student ID, or security card, providing a secure method of authentication, tracking usage and billing.

Saving you time so you can save money.

Whether it's out-of-the-box default settings like two-sided printing, or the built-in technology that avoids a second pass of the print engine if only one page was sent, our new technology helps you control who prints what, when and how.

ConnectKey evolves with your needs, starting with very simple controls from restricting usage and regulating color printing. The available User Permission control integrates with your internal authentication system — allowing you to prevent pre-determined or non-authenticated users from seeing specific features on the user interface, and to restrict color printing or single-sided documents universally or by application, time of day, or day of the week. And our Windows print drivers give you the ability to save different settings per application, minimizing the need for your users to make changes and reducing the risk of potential errors.

Reduced energy consumption for increased savings.

As a charter partner of the international ENERGY STAR® program, each new generation of Xerox® products offers more functionality and uses less energy — saving our customers money and reducing their carbon footprint.

Plus, ConnectKey multifunction printers are compatible with energy management solutions such as Cisco® EnergyWise.

For more information on Xerox's sustainability efforts, visit us at www.xerox.com/sustainability.

▶ Click to jump to the following sections:

Xerox® ConnectKey™ Product Portfolio

Introducing our ConnectKey multifunction printers.



ColorQube® 9300 Series

- A3 color output
- Print speeds as fast as 38 to 55 ppm for color, as fast as 50 to 60 ppm for black-and-white
- High desire for low color run costs and low total cost of ownership
- Environmentally conscious Solid Ink technology

[ColorQube 9300 Series Webpage](#)

[ColorQube 9300 Series Detailed Specifications](#)



WorkCentre® 5800 Series

- A3 black-and-white output
- Print speeds as fast as 45 to 90 ppm
- Need black-and-white printing and copying, but want scanning in color
- A wide array of finishing options, including hole punch, staple, insertions, folder and booklet maker

[WorkCentre 5845/5855 Webpage](#)

[WorkCentre 5865/5875/5890 Webpage](#)

[WorkCentre 5845/5855 Detailed Specifications](#)

[WorkCentre 5865/5875/5890 Detailed Specifications](#)



WorkCentre® 7800 Series

- A3 color output
- Print speeds as fast as 30 to 50 ppm for color, as fast as 30 to 55 ppm for black-and-white
- Need for easy-to-use or professional color workflows
- Meets requirement for media flexibility for office outputs

[WorkCentre 7800 Series Webpage](#)

[WorkCentre 7800 Series Detailed Specifications](#)

Key Features and Solutions Capabilities

Convenience	Standard	Apple AirPrint™, Single Touch Scan, Xerox® Mobile Express Driver®
	Optional	ConnectKey for Sharepoint, Wi-Fi Kit, Xerox® Printback, Xerox® Mobile Print, Xerox® Mobile Print Cloud
Productivity	Standard	Address Book Integration, Remote Control Panel, Application Defaults, Searchable PDF, XPS Print Kit ¹ , Print Around, TWAIN, Scan to Home, Scan to Email, Scan to Mailbox, Cloning, Online Support, Color By Words, Xerox® Global Print Driver®, Xerox® CentreWare® Web
	Optional	Xerox® Scan to PC Desktop® SE and Pro, Foreign Device Interface Kit, Unicode Fonts Kit
Security	Standard	McAfee® Embedded, McAfee ePO Compatible, Hard Disk Image Overwrite, 256-bit Encryption (FIPS 140-2 compliant), Secure Print, Secure Fax, Secure Email, Cisco® TrustSec integration, Network Authentication, SSL, SNMPv3, Common Criteria Certification ²
	Optional	McAfee Integrity Control, Smart Card Enablement (CAC/PIV, .NET), Secure Access (Magstripe, Legic, Mifare, IND/EMM/HITAG for example)
Cost Control	Standard	Print policies, User Permissions, Xerox® Standard Accounting, Xerox® Power Management
	Optional	Equitrac Office®, YSoft® SafeQ®, Print Audit and many other Alliance Partner Solutions

¹XPS Print Kit is optional on WorkCentre 5800 Series and 7800 Series

²Certification pending



For more information visit us at www.xerox.com/connectkey

